

An invention licenced from Assim Ishaque & family
Patented GB2531575, Design Reg. 4038662

WARNING! CHOKING HAZARD.

Not suitable for children under 36 months. Choking hazard (small parts). Please remove all packaging attachments before giving this product to a child. Please use discretion if making purchases for children younger than the age recommended on this package. Product specifications, colour and contents may vary from those illustrated.

IMPORTANT: Please retain packaging/instructions and purchase details for future reference as they contain important information.



Art No: 06515-010323-V1

Item: Simbrix Rainbow
Palace
Item Number: 08001
Age Grade: 5 Years Plus



Manufactured by:
Character Options Ltd.,
Lees Brook Mill, Lees Road,
Lees, Oldham OL4 5JL, UK.
Customer Service Department
Tel No: **0161 633 9808**
Made in China

www.character-online.co.uk

PROXY A/S
Gothersgade 14, 3rd Floor DK-1123
Copenhagen K, Denmark
www.proxy.toys

SIMBRIX

GET YOUR BRIX FIX!®

**TOTALLY
MESS FREE**



RAINBOW-PALACE

CONTENTS

1000+ Simbrix
5x short Simstix
3x long Simstix
3x short bar Simstix

INSTRUCTIONS



RAINBOW PALACE

SIMBRIX is the fun, easy to build, creative 'Brix' system you can use again and again. Each set is made up of a number of 'Small builds' where you create the individual parts of the larger 3D display.

Follow the easy 'how to' guide and steps below to create your SIMBRIX Set.

CONNECT



Follow templates in the booklet to assemble designs.

Use Stimstix to build in 3D



Build designs in 3D by slotting Stimstix into the centre of a Simbrix and connecting to another design.

PLAY



Follow the 3D build instructions in the booklet to make 3D displays or create your very own.

CONNECTING-SIMBRIX

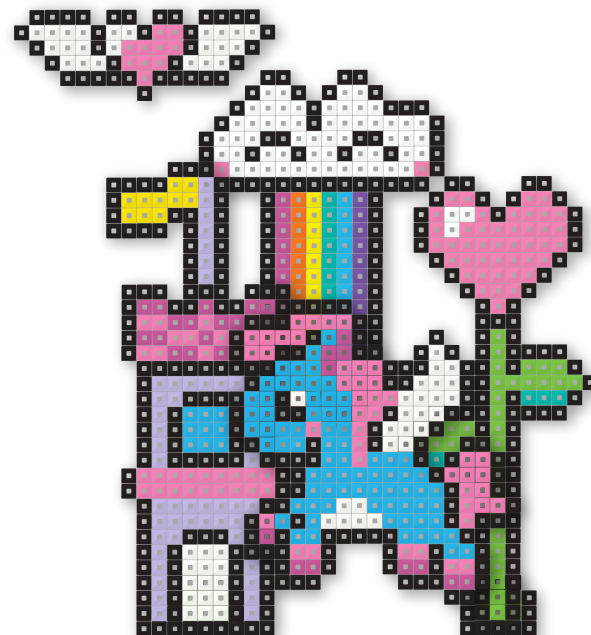


CORRECT
Make sure each Simbrix is slotted in the same way.



INCORRECT
If a Simbrix is slotted in a different orientation, designs may be impossible to complete..

FINAL BUILD



FRONT

Pegasus

MIDDLE

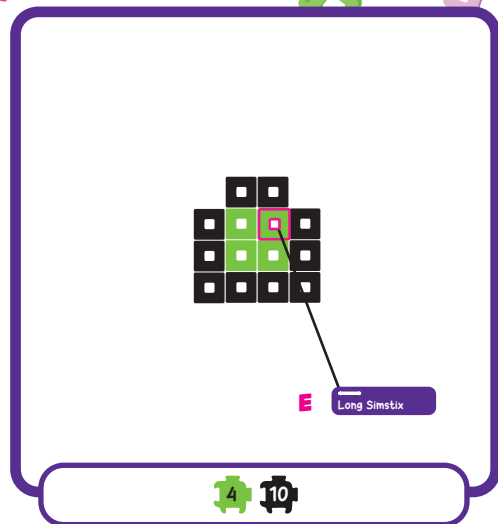
Palace
Flying Heart
Heart stalk

BACK

Rainbow Cloud
Grassx2

Scan the QR code for video tutorials





GRASS 2



BUILD KEY & EASY STEPS

1

BUILD EACH PART !

Follow the build template for each design, to select the right number of BRIX and build up the design.

(Build guide found on the NEXT PAGE)

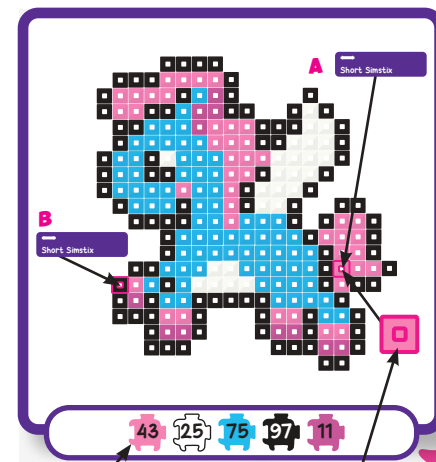
Once a build is complete set it aside and move onto another design.

NOTE: If you get stuck you can use the QR code below to download full size templates



Scan the QR code to visit the Simbrix website for ideas, tutorials and full-size printable templates

EXAMPLE BUILD TEMPLATE



PEGASUS

Number & colour of Brix required for the design.

SIMSTIX location points are outlines with a colour and a letter for assembly.

2

USE SIMSTIX TO CONNECT DESIGNS TOGETHER !

Build 3D displays using the SIMSTIX supplied. Each build template shows the location and size of the SIMSTIX needed to connect the designs together. Each location is marked with a letter to match one end of a SIMSTIX.

For example push one end of a SIMSTIX into brix labelled C and attach the other end into the other build labelled C.

Use the image on the final build page to see placement of the 3D Build.

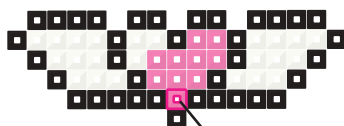
Once each SIMSTIX is attached the design can stand and be displayed.



Short Simstix

Long Simstix

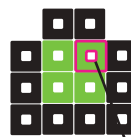
Short Bar Simstix



G Short Bar Simstix

10 23 36

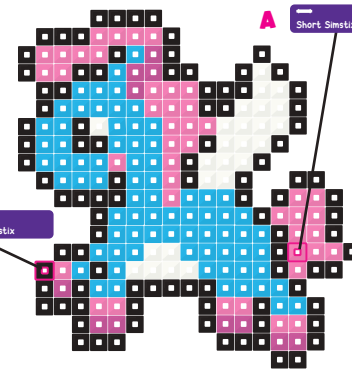
FLYING HEART



F Long Simstix

4 10

GRASS 1

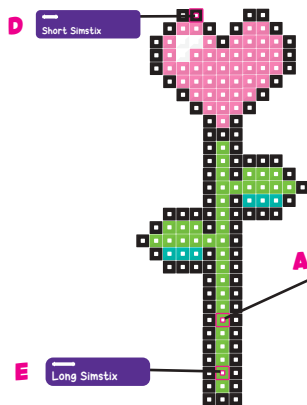


B Short Simstix

A Short Simstix

43 25 75 97 11

PEGASUS



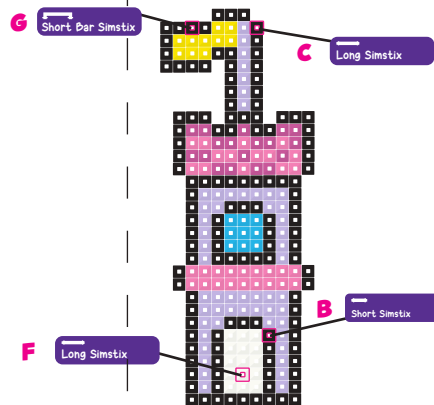
D Short Simstix

A Short Simstix

E Long Simstix

3 6 18 43 35

HEART STALK



G Short Bar Simstix

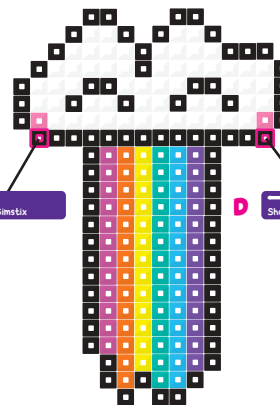
C Long Simstix

F Long Simstix

B Short Simstix

10 32 15 18 124 9 54

PALACE



C Short Simstix

D Short Simstix

14 14 2 76 56 14 12 13 13

RAINBOW CLOUD



Scan the QR code to visit the Simbrix website for ideas, tutorials and full-size printable templates